

Et la géographie prend vie.





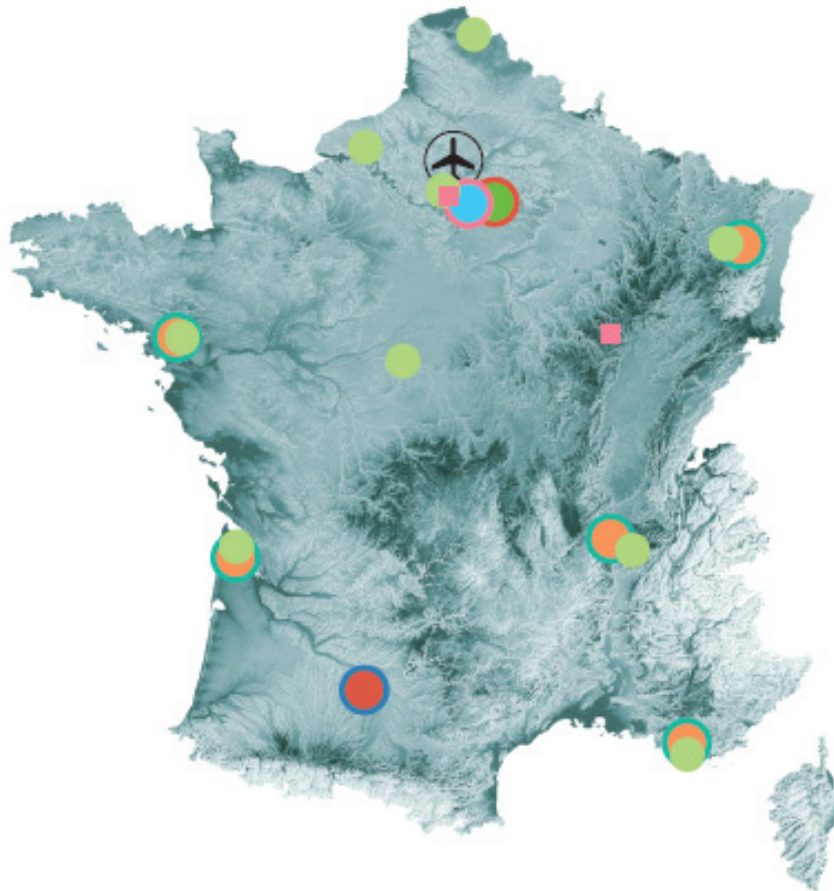
IGN : National Geographic Institute (France)

Status: Public State-owned institution of an administrative nature

IGN's key missions are to produce, maintain and disseminate reference geographic information in France.

Heir to a long line of cartographers, IGN has been involved in all cartography-related operations in France and its territories, since 1940.

1500 persons



Implantations

RÉSEAU COMMERCIAL

- 14 agences commerciales basées à Aix-en-Provence (Bouches-du-Rhône), Bordeaux (Gironde), Lille (Nord), Lyon (Rhône), Nancy (Meurthe-et-Moselle), Nantes (Loire-Atlantique), Paris, Rouen (Seine-Maritime) et Villefranche-sur-Cher (Loir-et-Cher).
- 2 boutiques à Dijon (Côte-d'Or) et Paris.
- 8 000 points de vente.

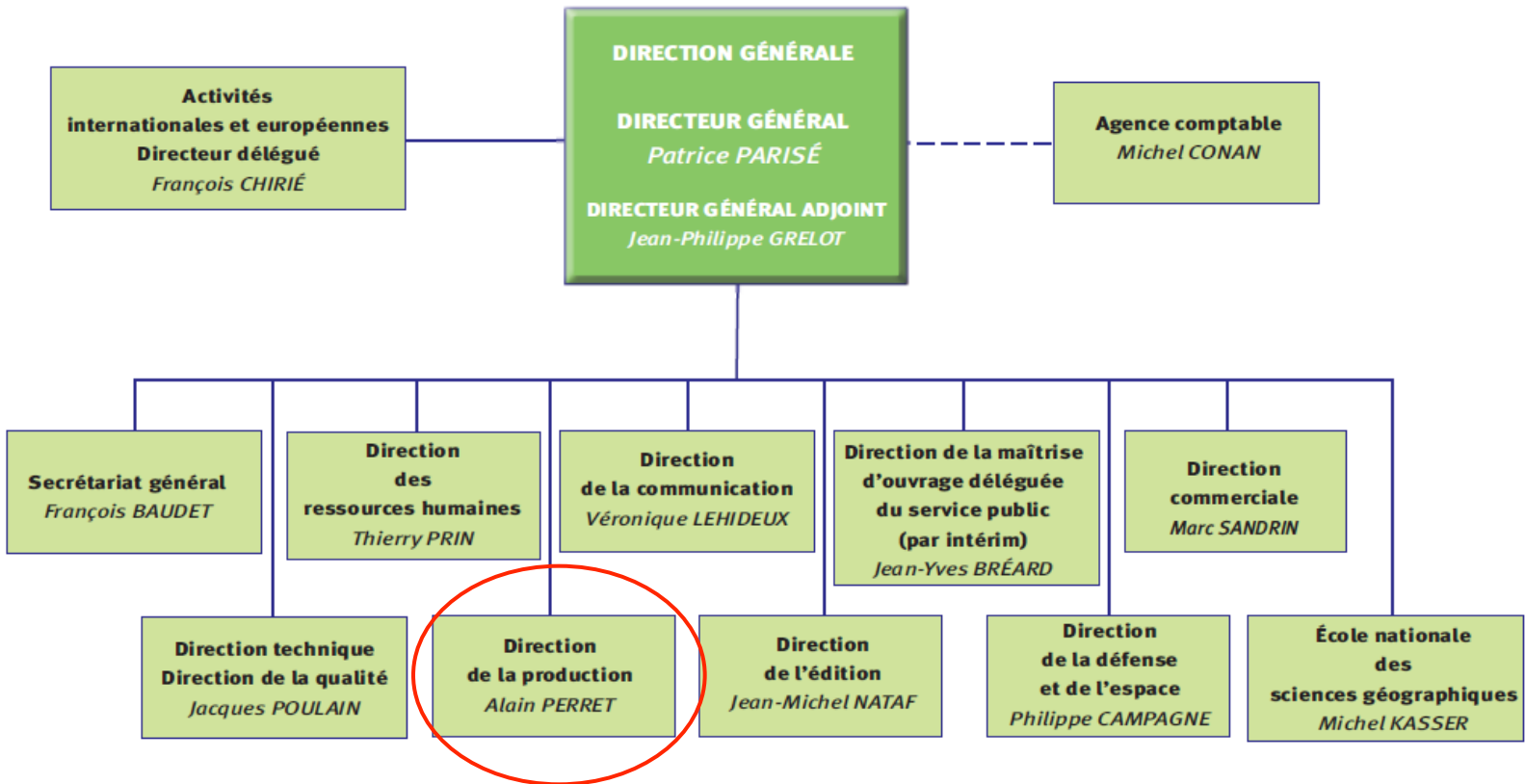
CENTRES DE PRODUCTION

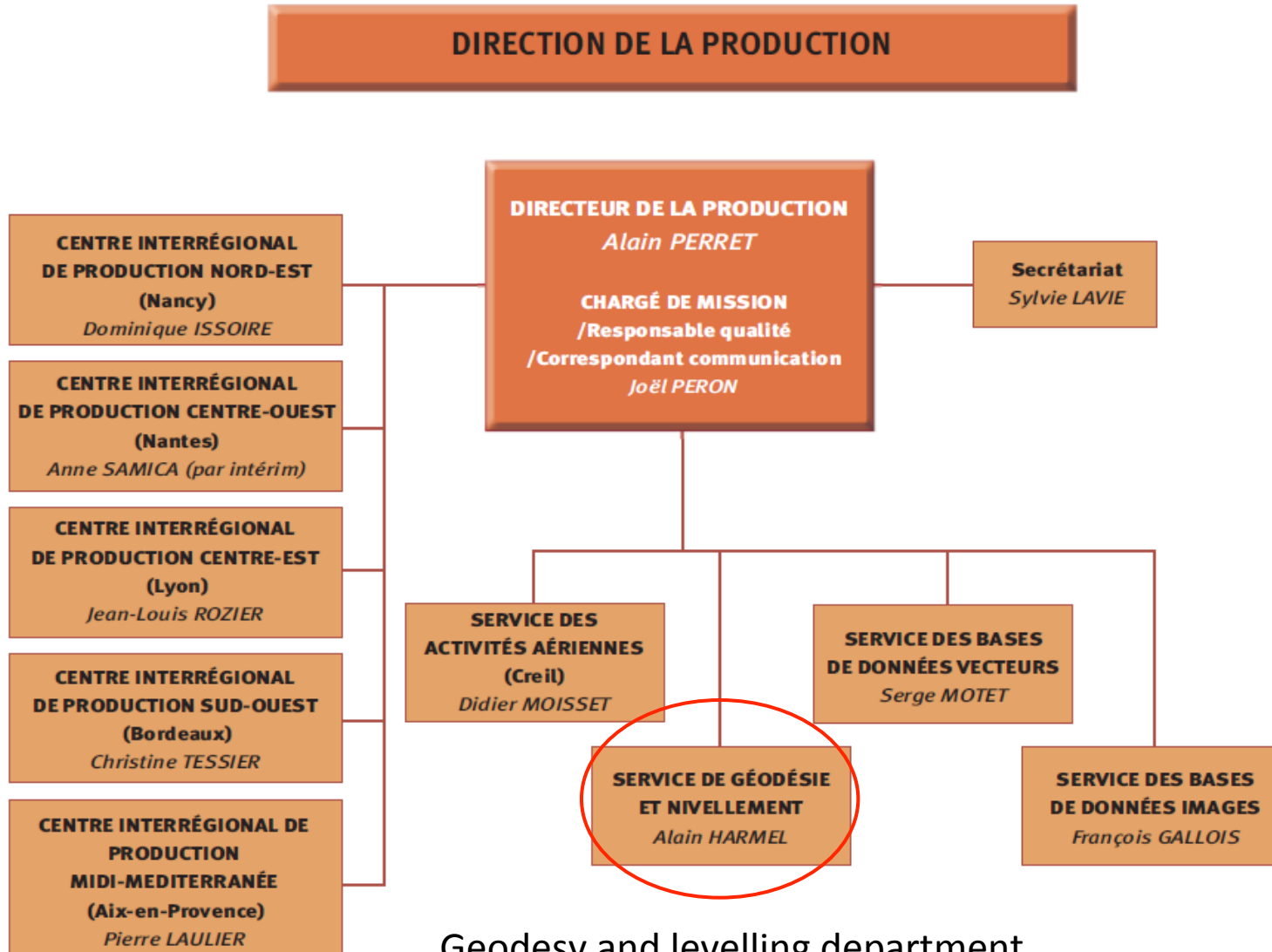
- Saint-Mandé (Val-de-Marne).
- 5 centres interrégionaux : Aix-en-Provence, Bordeaux, Lyon, Nancy et Nantes.
- ✈ Service des activités aériennes à Creil (Oise).
- IGN Espace à Toulouse (Haute-Garonne).
- École nationale des sciences géographiques (ENSG) à Marne-la-Vallée (Seine-et-Marne).

- Head and main production center (Saint Mandé)
- IGN Defence and Space (Toulouse)
- National School of Geographic Sciences (Marne La Vallée)
- Aerial activities Department in Creil
- 5 regional production centers

Organization Chart

INSTITUT GÉOGRAPHIQUE NATIONAL





Geodesy and levelling department (SGN)

Maintain and deliver the geodetic national reference

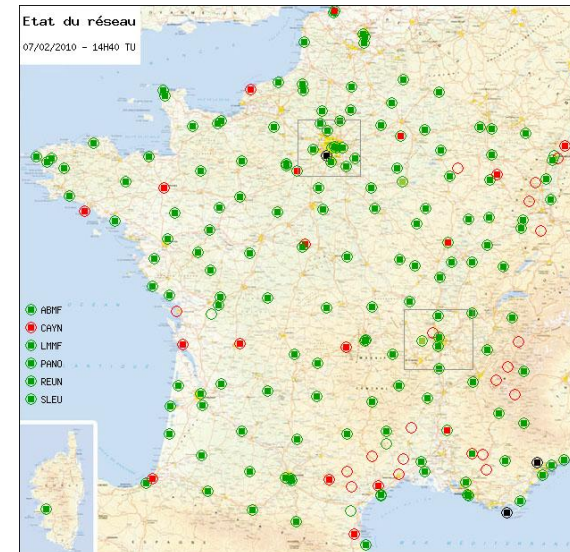
- fixed geodetic networks



- Federate nationals and permanent GNSS project (since 2004)

25 owns stations and 225 from partners

<http://rqp.ign.fr>



Geodesy and levelling department (SGN)

Contribution to geodetic international organizations

Worldwide Networks & Services unit (head B. Garayt)

➤ Networks



- DORIS
network management: deployment, maintenance and geodetic survey

The Doris system is a french civil precise orbit determination and positioning system. It is based on the principle of the Doppler effect with a transmitting terrestrial beacons network and onboard instruments on the satellite's payload (antenna, radio receiver and oscillateur ultra-stable).



- International Terrestrial Reference Frame
local surveys on co-location sites, international geodetic sites
database

ITRF coordinates were obtained by combination of individual TRF solutions computed by IERS analysis centers using the observations of Space Geodesy techniques : GPS , VLBI , SLR, LLR and DORIS. They all use networks of stations located on sites covering the whole Earth.



➤ Data and analysis centers

- IGS, EUREF and IDS data centers
- IGS reference frame coordination





IGN

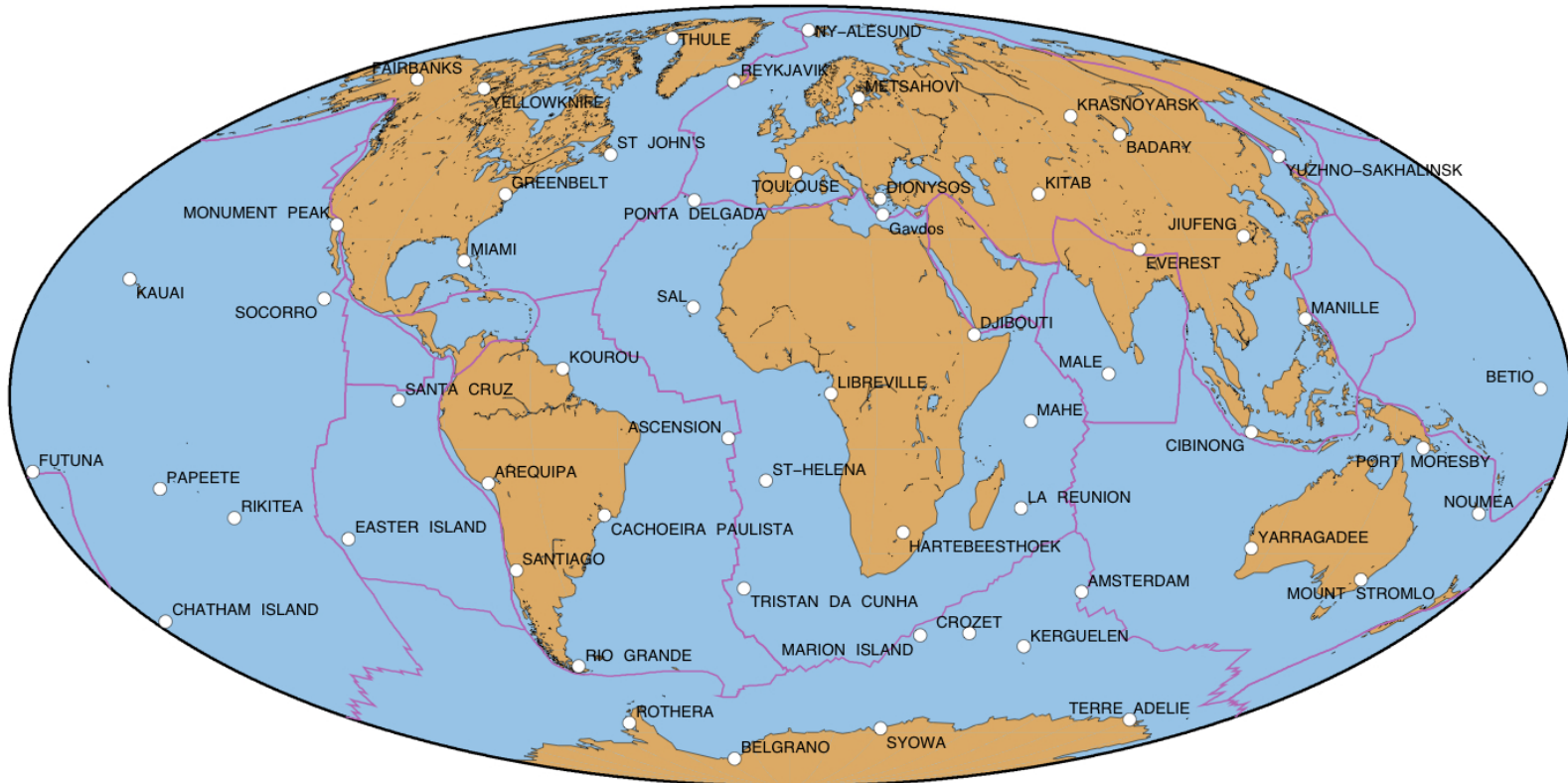
Contribution to geodetic international organizations

- Since 1994 IGS global data center
- Since 2010 IGS reference frame coordination
- IGS combination center

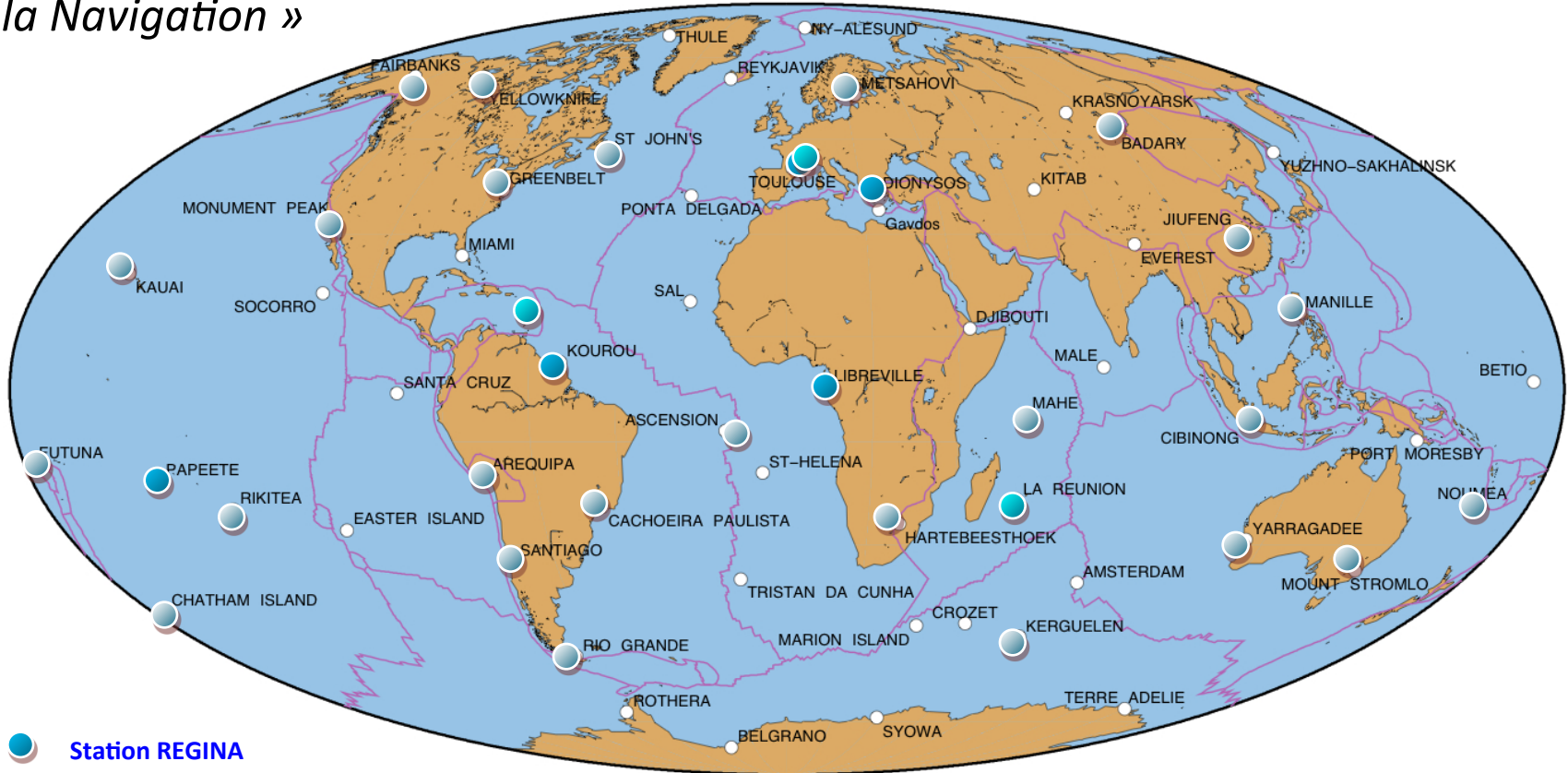
- Since 2004 IDS global data center
- IDS analysis center in cooperation with JPL

- EUREF local data center
- EUREF participation (analysis and combination)

Cooperation since 1986 between CNES & IGN for DORIS network set up
Operating in 1990



new project initialized by CNES in 2010: REGINA « Réseau Gns pour l'IGS et la Navigation »



 Station REGINA

 Station RGP contribuant à REGINA