

REGINA Station

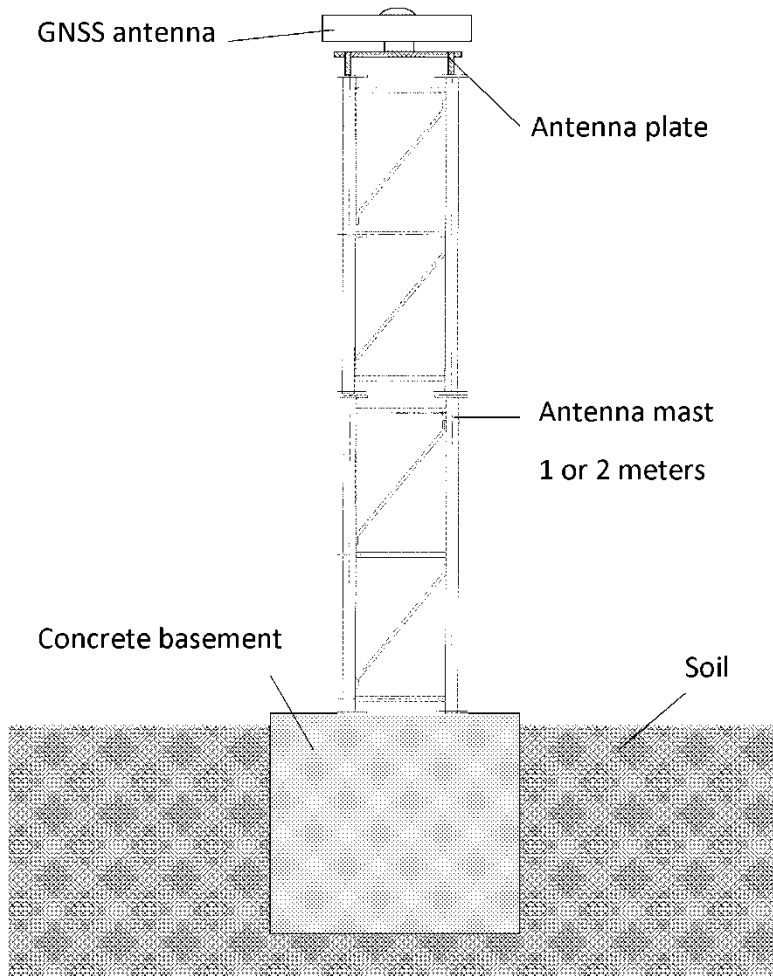
technical requirements

«REseau GNSS pour l'IGS et la Navigation»
GNSS Network for IGS and Navigation

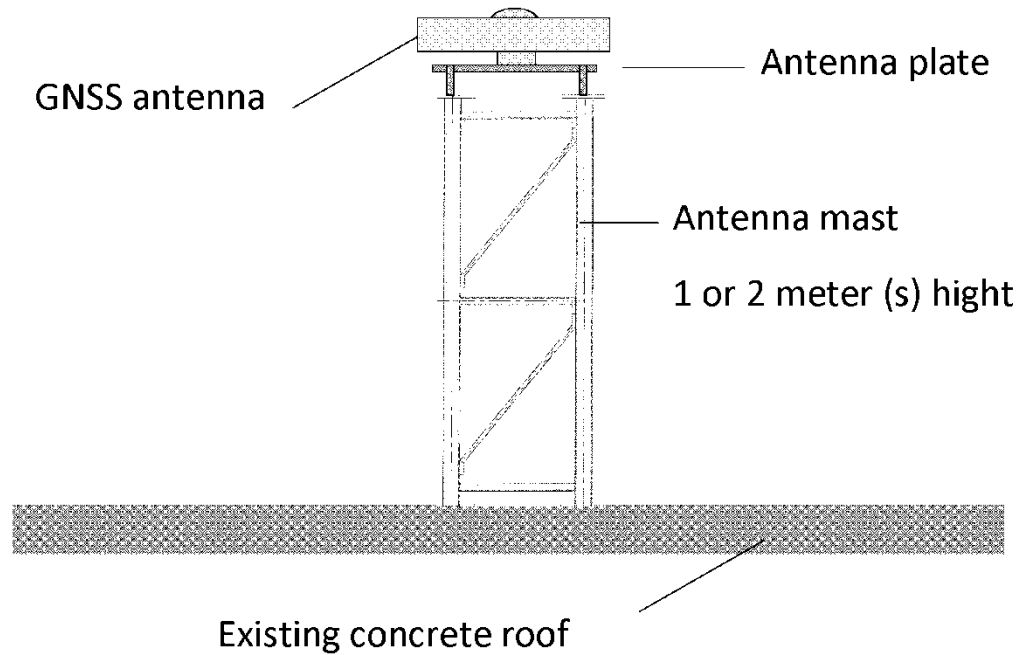
- **stable mount (ground or building)**
- **distance from DORIS antenna: 5 m to 1 km (short distance, up to 100 m preferred)**
- **low geometric masks (minimum obstructions above 15°)**
- **with existing shelter/room for receiver housing (30 meters around the antenna) or possible installation for it**
- **at least 1 km from powerful microwave sources, independent of the receiver operating frequency band (1.1 – 1.6 GHz)**
- **antenna location must be secured over the long-term (no planned constructions, demolition...)**

- **restricted access**
- **standard 110 or 220 VAC power supply**
- **internet line tap**
- **sheath inlet for REGINA antenna cable**

- **Symmetric Digital Subscriber Line (SDSL) preferred**
- **min rate: 64 kbps**
- **1 fixe IP allowance to the receiver**
- **permanent and continuous connection**
- **the host agency may appoints a computer network correspondent to facilitate receiver configuration and network access...**



Building antenna typical monument



Typical list of permanent equipment

quantity	equipment	location
1 or 2	Mast section	Antenna site
1	Antenna plate	Antenna site
1	Antenna screw	Antenna site
1	Geodetic mark	Antenna site
1	Batch screw	Antenna site
1	GNSS cable	Antenna to receiver
1	Network cable	Receiver site
1	Professional GNSS receiver	Receiver site
1	Multi GNSS antenna	Receiver site
1	GNSS radom	Receiver site
1	Computer rack	Receiver site
1	UPS unit	Receiver site